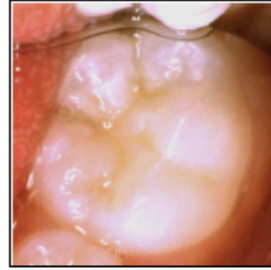
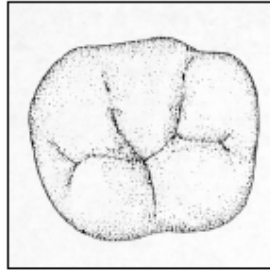


# The Keels-Coffield Clinical Severity Scale of Dental Erosion

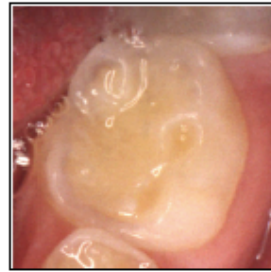
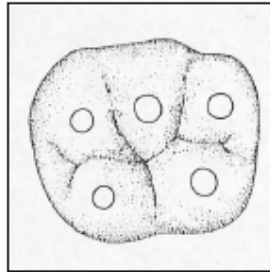
## Suggested Treatments (specifically for GERD):

Level 0  
NO EROSION



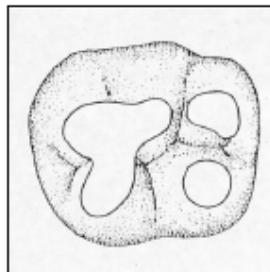
None

Level 1  
MILD  
Only the cusp tips are affected; shallow “moon craters” are present



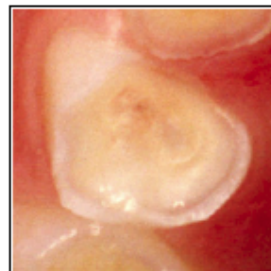
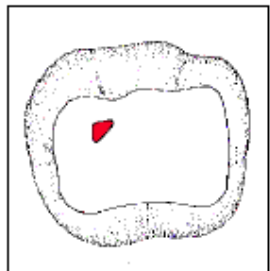
- If the child confirms a positive history of GERD symptoms, refer to his/her pediatrician or a GI specialist for testing and management.
- If there is no dental sensitivity, routine fluoride applications and sealants may be adequate.
- If dental sensitivity occurs, protect the teeth with occlusal composite resin build-ups.
- Monitor and document the erosive lesions with photographs and/or casts (as tolerated by the child).

Level 2  
MODERATE  
Deep “moon craters” or depressions are present and may coalesce



- Same recommendations as for MILD erosions, however, teeth with MODERATE erosions will require occlusal composite resin build-ups or SSC's to protect against further loss of tooth structure.

Level 3  
SEVERE  
Teeth are slick with little or no anatomy present; possible pulpal exposures



- Same recommendations for MILD and MODERATE erosions, however teeth with SEVERE erosions may require pulp therapy or extraction (if non-restorable).